

About the University

Auburn University is a land-grant institution with a focus on teaching, research, and community outreach. It is consistently ranked in the top 50 public institutions in the country. The university offers incoming students the following support services:

Transportation

Tiger Transit, the campus bus system, extends to most off-campus housing.

International Programs

Visit auburn.edu/academic/international for more information.

Statistical Services

The School of Forestry & Wildlife Sciences provides statistical consulting services for graduate student research.

Housing

Graduate/family housing and apartments are available near campus. For more information, visit offcampushousing.auburn.edu.

For more information, visit believein.auburn.edu.

About the Community

With a low crime rate, moderate cost of living, and convenient access to larger metropolitan areas, the city of Auburn, Alabama, was recently selected as one of the top ten places to live in the United States. Auburn offers the following amenities:

- Diverse restaurants, shopping, and ample cultural opportunities
- Pedestrian-friendly city and campus
- Excellent local school system
- Parks, bike routes, and trails

For more information about the city of Auburn, visit auburnalabama.org and aotourism.com.

**THIS IS CRUCIAL RESEARCH.
THIS IS WORK WITH MEANING.**

THIS IS AUBURN.

Contact: sfwsgradprograms@auburn.edu



auburn.edu/sfws

*Auburn University is an equal opportunity educational institution/employer.
Produced by the Office of Communications and Marketing, October 2015.*

AUBURN UNIVERSITY

Graduate Programs

*Working with Nature for
Society's Well-Being*



SCHOOL OF FORESTRY
AND WILDLIFE SCIENCES

Research That Matters

As human populations increase, the need for proactive conservation of species and ecosystems that are vital to our health and well-being increases as well. We seek to balance quality of life and the sustainability of key natural resources such as forests, wildlife, and water; however, conflicts often occur and must be resolved dispassionately using the best scientific information available. Come join us as we address these conflicts. This is your opportunity to conduct research aimed at finding solutions to some of the most critical issues facing society.

Areas of Research

Our faculty conduct relevant research that impacts our world. You can work with specialists in our key research areas which include:

- Bioenergy
- Climate change modeling
- Deer management
- Environmental health of humans & animals
- Feral hog control
- Forest health
- Forest nursery management
- Forest policy
- Innovation in forest products
- Landscape ecology
- Longleaf pine ecology
- Natural resources sociology
- Predator-prey relationships
- Urban-rural interface
- Water quality and hydrology
- Wetland ecology & management



Application

To find the right mentor and help facilitate the application process, applicants are strongly encouraged to review our faculty interests and contact a professor directly. Visit auburn.edu/sfws or auburn.edu/sfws/research for more details. For information about our research centers and cooperatives, see auburn.edu/sfws/research/centers-and-cooperatives.

Graduate Programs

- Forestry
MS & PhD offered
- Wildlife Sciences
MS & PhD offered
- Natural Resources
MS, Masters of Natural Resources (MNR)
Three MNR options are available:
 - Natural Resource Management
 - Advanced Forestry Studies
 - Professional Forester Applied Economics (*Interdepartmental PhD*)

Graduate Program Highlights

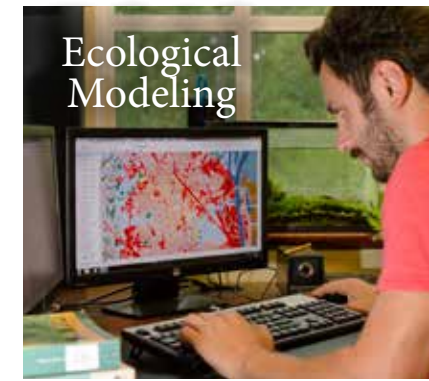
- Graduate enrollment ranges up to approximately 80.
- Currently, students come from 23 states and 9 countries.
- Graduate students frequently receive travel grants for research and to attend conferences.
- Our graduate students consistently publish their research in respected journals, make presentations at national meetings, and achieve honors and other recognition.

Application Requirements

- Online application at grad.auburn.edu
- Completed undergraduate degree
- Application fee
- GRE scores
- TOEFL or IELTS
(*For international students*)
- Transcripts
- Letter of Intent
- Three reference letters

Graduate Funding

We offer competitive assistantships, tuition waivers, health insurance, and financially support our graduate students' attendance at professional conferences. A number of fellowships and awards are also presented each year to outstanding graduate students.



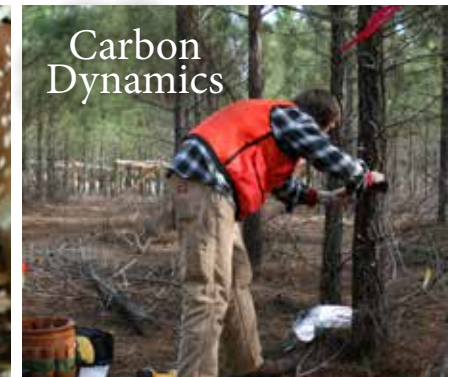
Ecological Modeling



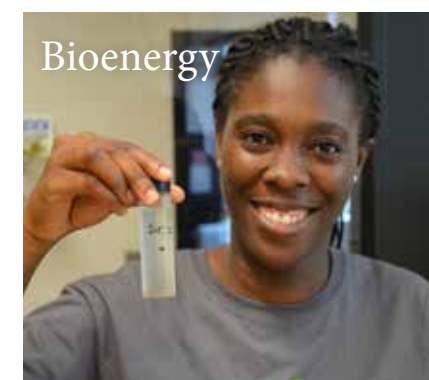
Human Dimensions



Deer Management



Carbon Dynamics



Bioenergy



Large Mammal Studies



Environmental Health



Water Quality